

Rotule SA SA22-BK-DURBAL - SA22-BK-DURBAL

<https://www.123roulement.ch/roulement-palier/rotule/sa/sa22-bk-durbal>

SA22-BK



male thread;
maintenance free,
according to
DIN ISO 12240-4,
series K

Description: DIN ISO rod end K series. Sliding combination steel / bronze-PTFE composite.

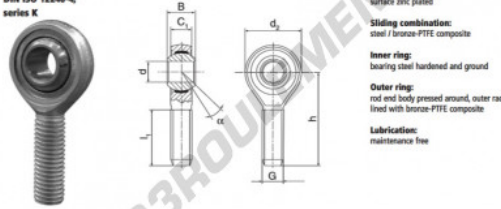
Rod end body:
surface zinc plated

Sliding combination:
steel / bronze-PTFE composite

Inner ring:
bearing steel hardened and ground

Outer ring:
rod end body pressed around, outer race
lined with bronze-PTFE composite

Lubrication:
maintenance free



order number	measurement [mm]		measurement [mm]		
	d	G	B	C ₁	d ₂
SA 22 BK	22	M 22 x 1,5	28	20,0	55

type	measurement [mm]		α [°]	load rating C ₀ [kN]	weight [kg]
	l ₁ min	h			
SA / SA 22 BK	50	84	15	68,00	0,480

CARACTÉRISTIQUES PRODUIT

Marque	DURBAL
N° Ean13	3663952492704
Diam. intérieur	22 mm
Diam. extérieur	55 mm
Epaisseur	28 mm
Type	SA
Poids	480 g
Filetage	Filetage à droite
Lubrification	sans
Conditionnement	1

contact@123roulement.ch

+33 359 36 04 90

CRT4 de Lesquin 60 Rue Du Haut De Sainghin 59273 Fretin FRANCE