

Rotule SA BEM06-20-501-DURBAL - BEM06-20-501-DURBAL

<https://www.123roulement.ch/roulement-palier/rotule/sa/bem06-20-501-durbal>

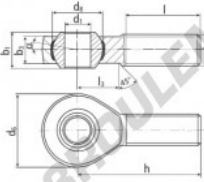
BEM06-20-501



male thread:
maintenance free,
adapter sizes
according to
DIN ISO 12240-4,
series K



**DURBAL® heavy-duty rod ends
with integral spherical
plain bearing**



rod end housing:
forged steel, tempered, rolled thread,
surface galvanized, free of Cr-VI

joint ball:
ball bearing steel, hardened and ground,
surface superfinished and chromium
plated

race:
nylon / teflon / glass fibre compound

tolerances:
see page 10

order number		measurements [mm]		weight		basic load rating	
type	type	d ₁	d ₂	d ₃	d ₄	d ₅	stat.
BEM 06 -20 -501		6	M 6	20	12,65	9	6,75
measurements [mm]		weight		basic load rating		stat.	
type	h	l	l ₃	α ₁ °	α ₂ °	C	C ₀
BEM 06	36	22	12	13,0	6,5	0,020	4590 7800

CARACTÉRISTIQUES PRODUIT

Marque	DURBAL
N° Ean13	3663952507774
Diam. intérieur	6 mm
Diam. intérieur	0.236" inch
Diam. extérieur	20 mm
Diam. extérieur	0.787" inch
Epaisseur	9 mm
Epaisseur	0.354" inch
Type	SA
Poids	20 g
Filetage	Filetage à droite
Lubrification	sans
Conditionnement	1

contact@123roulement.ch

+33 359 36 04 90

CRT4 de Lesquin 60 Rue Du Haut De Sainghin 59273 Fretin FRANCE