

# Rotule SA BEM30-20-502-DURBAL - BEM30-20-502-DURBAL

<https://www.123roulement.ch/roulement-palier/rotule/sa/bem30-20-502-durbal>

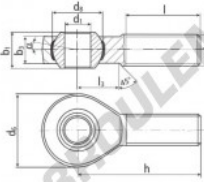
## BEM30-20-502



male thread:  
maintenance free,  
adapter sizes  
according to  
DIN ISO 12240-4,  
series K



**DURBAL® heavy-duty rod ends  
with integral spherical  
plain bearing**



rod end housing:  
forged steel, tempered, rolled thread,  
surface galvanized, free of Cr VI

joint ball:  
ball bearing steel, hardened and ground,  
surface superfinished and chromium  
plated

race:  
nylon / teflon / glass fibre compound

tolerances:  
see page 10

order number		measurements [mm]		weight		basic load rating	
type	type	d <sub>1</sub>	d <sub>2</sub>	d <sub>3</sub>	d <sub>4</sub>	b <sub>1</sub>	b <sub>2</sub>
BEM 30 -20	-502	30	M 30 x 2	70	50,75	37	25,0
measurements [mm]		weight		basic load rating			
type	h	l	l <sub>3</sub>	α <sub>1</sub> °	α <sub>2</sub> °	dyn. C	stat. C <sub>0</sub>
BEM 30	110	66	35	17,0	10,5	[kg]	[N] [N]

## CARACTÉRISTIQUES PRODUIT

Marque	DURBAL
N° Ean13	3663952507965
Diam. intérieur	30 mm
Diam. extérieur	70 mm
Épaisseur	37 mm
Type	SA
Poids	1015 g
Filetage	Filetage à gauche
Lubrification	sans
Conditionnement	1

[contact@123roulement.ch](mailto:contact@123roulement.ch)

+33 359 36 04 90

CRT4 de Lesquin 60 Rue Du Haut De Sainghin 59273 Fretin FRANCE