

# Rotule SA BEM22-60-501-DURBAL - BEM22-60-501-DURBAL

<https://www.123roulement.ch/roulement-palier/rotule/sa/bem22-60-501-durbal>

## BEM22-60-501



male thread;  
maintenance free,  
adapter sizes  
according to  
DIN ISO 12240-4,  
series K

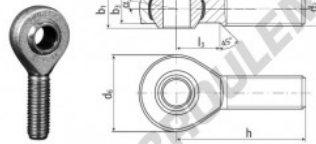
**DURBAL® heavy-duty rod ends  
with integral spherical  
plain bearing in stainless steel**

rod end housing:  
stainless steel 1.4301, rolled thread,  
surface with pickling treatment

joint ball:  
stainless steel, hardened and ground,  
surface superfinished

race:  
nylon / teflon / glass fibre compound

tolerances:  
see page 10



order number		measurements [mm]		measurements [mm]		weight		basic load rating	
type	right-hand thread	d <sub>1</sub>	d <sub>2</sub>	d <sub>3</sub>	h <sub>1</sub>	h <sub>2</sub>	[kg]	dyn	stat.
BEM 22 -60	-501	22	M 22 x 1,5	54	38,05	28		23480	63600
measurements [mm]		weight		basic load rating					
type	h	l	l <sub>1</sub>	α <sub>1</sub> <sup>1</sup> [°]	α <sub>2</sub> <sup>2</sup> [°]			C <sub>1</sub> [N]	C <sub>2</sub> [N]
BEM 22	84	51	26	15,5	10,0	0,440		23480	63600

## CARACTÉRISTIQUES PRODUIT

Marque	DURBAL
N° Ean13	3663952509860
Diam. intérieur	22 mm
Diam. extérieur	54 mm
Epaisseur	28 mm
Type	-
Poids	440 g
Filetage	-
Lubrification	-
Conditionnement	-

[contact@123roulement.ch](mailto:contact@123roulement.ch)

+33 359 36 04 90

CRT4 de Lesquin 60 Rue Du Haut De Sainghin 59273 Fretin FRANCE