

# Rotule SA BEM30-60-502-DURBAL - BEM30-60-502-DURBAL

<https://www.123roulement.ch/roulement-palier/rotule/sa/bem30-60-502-durbal>

## BEM30-60-502



male thread;  
maintenance free,  
adapter sizes  
according to  
DIN ISO 12240-4,  
series K

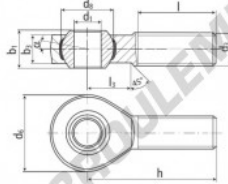
**DURBAL® heavy-duty rod ends  
with integral spherical  
plain bearing in stainless steel**

rod end housing:  
stainless steel 1.4571, rolled thread,  
surface with pickling treatment

joint ball:  
stainless steel, hardened and ground,  
surface superfinished

race:  
nylon / teflon / glass fibre compound

tolerances:  
see page 10



order number		right-hand thread		left-hand thread		measurements [mm]				
type		d <sub>1</sub>	d <sub>2</sub>	d <sub>3</sub>	d <sub>4</sub>	h	l	l <sub>1</sub>	l <sub>2</sub>	l <sub>3</sub>
BEM 30 -60	-502	30	M 30 x 2	70	50,75	37	25,0			
type		measurements [mm]			weight	basic load rating				
type	h	l	l <sub>3</sub>	α <sub>1</sub> [°]	α <sub>2</sub> [°]	[kg]	dyn. C [N]	stat. C <sub>0</sub> [N]		
BEM 30	110	66	35	17,0	10,5	1,015	33800	97100		

## CARACTÉRISTIQUES PRODUIT

Marque	DURBAL
N° Ean13	3663952509891
Diam. intérieur	30 mm
Diam. extérieur	70 mm
Epaisseur	37 mm
Type	SA
Poids	1015 g
Filetage	Filetage à gauche
Lubrification	sans
Conditionnement	1

[contact@123roulement.ch](mailto:contact@123roulement.ch)

+33 359 36 04 90

CRT4 de Lesquin 60 Rue Du Haut De Sainghin 59273 Fretin FRANCE